

Information on Kenya

Situated in the eastern coast of Africa and with a population of about 49 Million, Kenya is comprised of over 40 different ethnic tribes who have their own distinct languages, but across the country they share a commonality in the languages they speak, Swahili and English.

Kenya culture is rich and diverse, made up of Kenya traditions and customs, music and dance, arts, and the warmest of hospitality. Kenyans are a warm and friendly people, known to be group-oriented. "Harambee", known as one of the national symbols of Kenya is the country motto that means "to pull together", which speaks of their strong sense of community, and of helping each other in work and shared responsibilities.

Visas

Most Governments nowadays are moving towards digitization of their operations, and Kenya is no different. Online applications make it possible for visitors to obtain their Visas in advance hence removing the anxiety of obtaining a visa on arrival. The procedure for visa application has been modified and simplified to a user-friendly mode with three simple steps.

The E-Visa portal now has a dedicated website: <http://evisa.go.ke/evisa.html>. Visas are approved on a real-time basis.

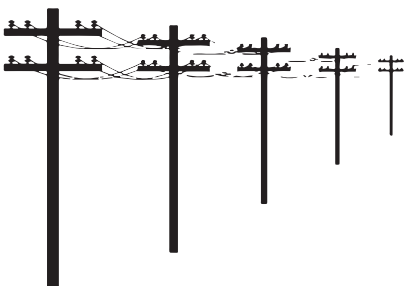
Visa fee is non-refundable since the application will be processed for approval or non-approval. The online payment of visa fee is in US dollars.

Currency

The Kenya Shilling (KES) is the national currency. There are no restrictions on the movement of currency into or out of Kenya for currency transaction purposes. Banks are generally open from 9.00 am to 4.00 pm Mondays to Fridays, and from 8.00 am to 1.00pm on Saturdays. International Credit Cards are widely accepted for payment in most hotels, restaurants and shops, particularly Visa, MasterCard and, on a more limited basis, American Express. Exchange bureaus and ATM machines are available throughout the Country and at the Airports. US Dollars, Euros and Sterling Pounds are most accepted and cause least delay. Please check for exchange rates on: www.xe.com

Electricity

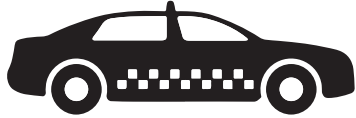
The electricity supply in Kenya is 240 volts AC. Sockets are usually 3 pin, and take the 13 amp "square" variety plugs.





Time

Kenya has only one time zone which covers the entire country. East Africa Time (EAT) is the time zone used in Eastern Africa and is 3 hours ahead of UTC (UTC+3), which is the same as Arabia Standard Time, Further-eastern European Time, Moscow Time and Eastern European Summer Time.



Transport services

We have affordable & safe rides within minutes in Nairobi from reliable taxi services such as Uber, Bolt, little cab, etc. Always confirm driver details and costs before embarking to your destination



Weather

Kenya lies on the equator and thus has a pleasant, tropical climate, with regional variations mostly related to altitude. Kenya's daytime temperatures average between 20°C/68°F and 28°C/82°F with a temperate dry wind. You may obtain "Nairobi Kenya typical June weather including average and record temperatures" from: www.AccuWeather.com



Drinking Water

It is recommended that visitors drink only bottled water and avoid ice in drinks. Hotels and Lodges generally provide bottled water or a thermos flask in your room with safe drinking water.



Photography

Taking photographs at airports, of state officials, policemen, state properties, military installations or the national flag is prohibited. Prior to taking photographs of local people, permission should ideally be obtained and in some cases you may be required to offer a tip for those pictures.



Tipping & Porterage

Although hotels and lodges include a service charge, it is customary to tip porters and waiters (USD 2-5 per service rendered) and safari drivers/guides (USD 15-20 per person per day is acceptable).



Liability and Insurance

Participants are advised to take out their own personal travel and health insurance as they would normally do when travelling abroad.



Safety and Security

As in any other destination, normal precautions should be taken. Don't leave bags or briefcases unattended when inside or outside the session halls. Hotels recommend that you use their safety deposit boxes for cash and valuables. It is also advisable not to walk alone in isolated areas in towns particularly after dark, just as you would do anywhere in the world.



Embassies & Consulates

All Embassies and High Commissions are located in Nairobi.



Preferred Hotels Close to Bomas

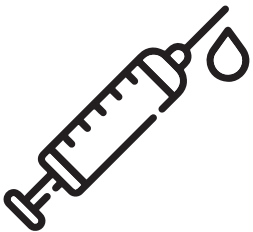
1. The Tamarind tree Hotel
<https://www.tamarindtree-hotels.com/>
2. The Weston Hotel
<https://www.westonhotel.com/>
3. Emara- Ole Sereni
<https://emara.ole-sereni.com/>
4. Ole Sereni
<https://ole-sereni.com/>



Covid Requirements

The following measures shall apply to travelers departing and arriving into the country.

1. All travelers arriving into the country through any point of entry shall no longer be required to show proof of either COVID-19 vaccination or a pre-departure COVID-19 test.
2. Only travelers arriving at any port of entry into Kenya with flu-like symptoms will be required to fill the passenger locator form on the 'jitenge' platform: https://ears.health.go.ke/airline_registration/. They will also be required to take a COVID19 antigen test upon arrival at their own cost. Those who turn out positive for antigen test will be required to take a further COVID-19 PCR test at their own cost. Those with severe symptoms shall thereafter be allowed to isolate as per the prevailing isolation requirements for mild, moderate and severe disease.
3. Passengers traveling out of the country will be required to abide by the particular travel, health and COVID-19 related requirements of the transit and destination country.
4. Pre-departure RDT or PCR testing may be considered at the discretion of any of the airlines departing from or terminating in Kenya.



Yellow Fever

Kenya requires a valid yellow fever certificate from all foreign visitors and citizens over 1 year of age travelling from an infected area or having been in transit through infected areas